

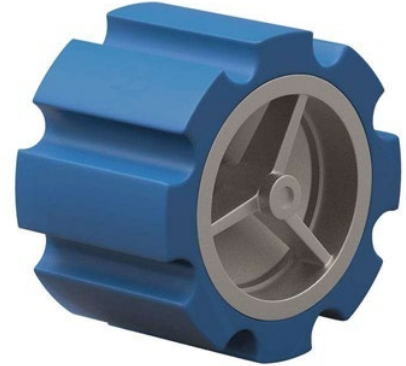


Product Overview

The Blaze BT 1414 Wafer Type Silent Check Valve is a compact, high-performance valve designed to prevent reverse flow and eliminate water hammer in pressurized fluid systems. Built for PN25 pressure applications, it ensures quiet operation and long-term durability in demanding environments.

Material List

No.	Part Name	Material	Specification
1	Body	Ductile Iron	EN Spec
2	Bonnet	Ductile Iron	EN-JS1050
3	Disc	Ductile Iron	EN-JS1050
4	Stem	Stainless Steel	BS970 420S37
5	Seat Ring	Bronze	-
6	Packing	Graphite	Non-Asbestos
7	Hand Wheel	Ductile Iron	EN-JS1050



Features

- Silent, non-slam closing mechanism minimizes water hammer
- Wafer-type design allows easy installation between flanges
- Spring-loaded disc provides fast and reliable shutoff
- Rated for PN25 pressure systems
- RAL 5015 FBE Coating (internal & external) for enhanced corrosion resistance
- Complies with BS 5153 for check valve performance

Size Range:
2" to 14" (DN50 to DN350)

Applications

- High-pressure water pipelines
- Steam and condensate return systems
- Pump discharge lines
- Oil and process fluid handling
- HVAC and fire protection systems

Technical Specifications

- Parameter Specification
- Type Wafer Type Silent Check Valve
- Size Range DN50 – DN350
- Pressure Rating PN25
- Temperature Range –20°C to 110°C
- Medium Water, Oil, Steam
- Design Standard BS 5153
- Coating Blue RAL 5015 FBE Coating (Internal & External)

**BLAZE**

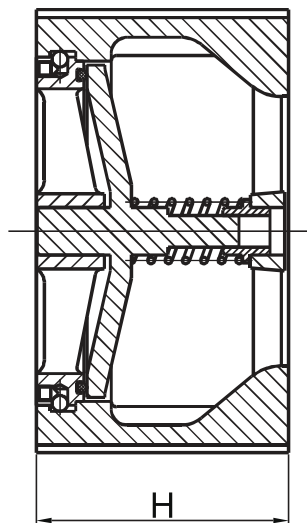
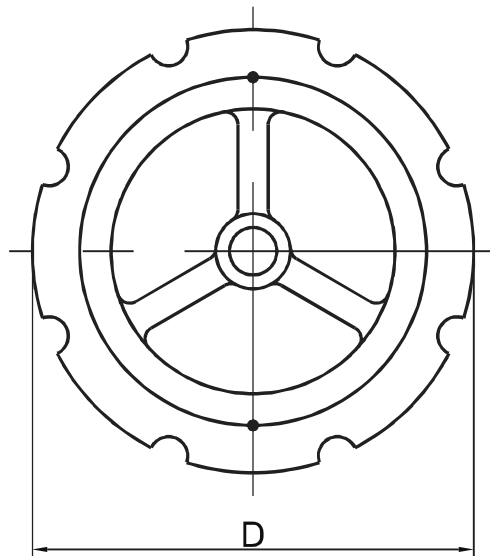
Wafer Type Silent Check Valve – PN 25

Model No. BT 1414

Dimensions

DN	mm	50	65	80	100	125	150	200	250	300	350
inch		2	2-1/2	3	4	5	6	8	10	12	14
D		110	136	152	178	221	248	340	404	415	484
H		67	73	80	102	118	140	165	210	286	350

Note: All dimensions are for informational purposes only. Final details should be verified with the approved technical drawings.



Disclaimer: Images shown are for illustration purposes only. Actual products may vary in appearance and specification. Specifications are subject to change without notice.