



# BLAZE

# Variable Orifice Double Regulating Valve

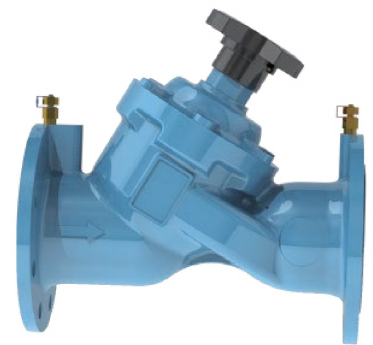
Model No. BT 1422

## Product Overview

The Blaze 1422 Variable Orifice Double Regulating Valve is designed for precise flow control and system balancing in heating, ventilation, and air conditioning (HVAC) and water distribution systems. This valve combines flow measurement, regulation, and shut-off functions in one compact unit. Equipped with two pressure test points, it allows accurate differential pressure readings for flow calculation and system diagnostics. Its robust construction, versatile flange compatibility, and compliance with international standards make it suitable for a wide range of commercial and industrial applications.

## Material List

No.	Part Name	Material	Specification
1	Body	Ductile Iron	EN-JS 1040
2	Disc	Ductile Iron+EPDM	EN-JS 1050+EPDM
3	Stem	Stainless Steel	BS 970 410S21
4	Stem Nut	Brass	EN 12165 CW617N
5	Stem Lock Bushing	Brass	EN 12165 CW617N
6	Cover	Ductile Iron	EN-JS 1040
7	Packing Gland	Brass	EN 12165 CW617N
8	Handwheel	ABS	-
9	Test Valve	Brass	EN 12165 CW602N



## Features

- Combines flow regulation and isolation functions
- Two pressure test valves for accurate flow measurement
- Variable orifice design ensures precise and repeatable control
- Designed to BS 7350 standard
- Durable epoxy coating (Blue – RAL 5015)
- Suitable for both hot and cold-water systems
- Easy installation with flanged end connections
- Reliable performance in HVAC and water balancing applications

## Applications

- HVAC systems (heating and cooling water circuits)
- Chilled water and condenser water systems
- Potable and non-potable water systems
- District heating and cooling systems
- Industrial water circulation loops
- Building services and plant room installations

## Technical Specifications

- Design Standard: BS 7350
- Size Range: DN50 to DN600
- Working Pressure: 16 Bar
- Temperature Range: 0°C to 80°C
- Flange Connection Standards:  
ASME Class 125 / Class 150  
BS EN 1092-2 PN10 / PN16
- Coating: Epoxy Blue (RAL 5015)
- Body Type: Variable orifice with integrated test points
- Functionality: Flow regulation, measurement, and isolation

Disclaimer: Images shown are for illustration purposes only. Actual products may vary in appearance and specification. Specifications are subject to change without notice.



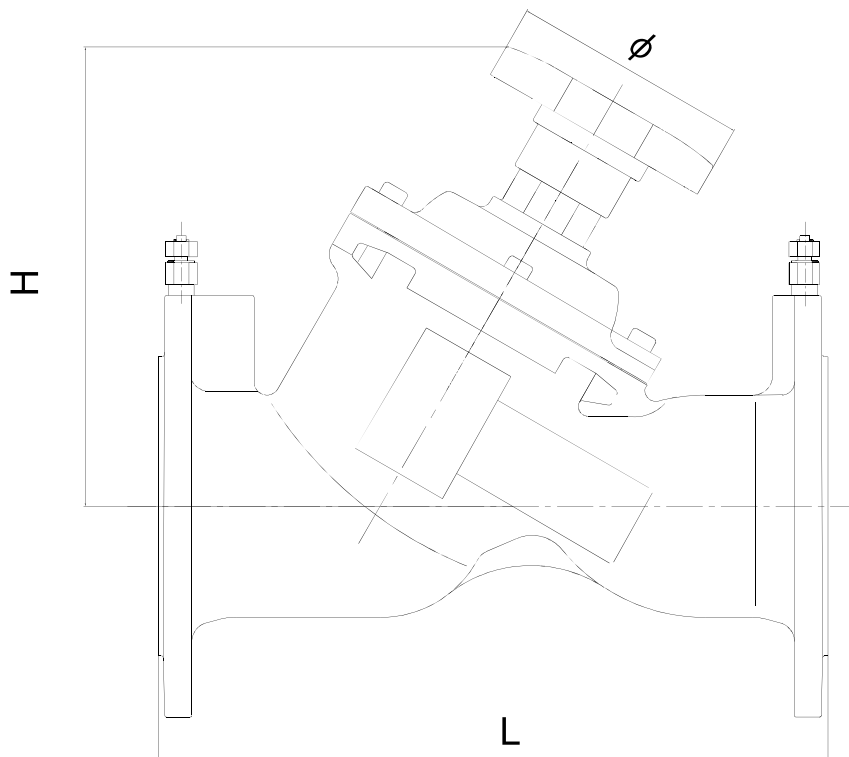
# BLAZE

## Dimensions

DN	65	80	100	125	150	200	250	300
Inch	2-1/2"	3"	4"	5"	6"	8"	10"	12"
H	228	235	239	298	311	507	570	686
L	290	310	350	400	480	600	730	850
∅	150	150	150	150	150	280	420	420

**Note:** All dimensions are for informational purposes only. Final details should be verified with the approved technical drawings.

Dimensional details for valves above 12" size are available upon request.



Disclaimer: Images shown are for illustration purposes only. Actual products may vary in appearance and specification. Specifications are subject to change without notice.