



Double Flanged Butterfly Valve

Model No. BT 1425

BLAZE

Product Overview

The BLAZE™ BT 1425 Double Flanged Butterfly Valve is engineered for reliable performance in water, oil, and gas applications. Designed in accordance with BS 5155, it offers robust construction, excellent sealing, and long service life, making it ideal for high-performance flow control in municipal, industrial, and commercial systems. Its double flanged design allows easy installation between flanges in large pipeline systems, while the Fusion Bonded Epoxy (FBE) coating ensures superior corrosion resistance.

Material List

No.	Part Name	Material	Specification
1	Body	Ductile Iron	EN-JS 1050
2	Disc	Ductile Iron	EN-JS 1050
		Bronze	EN 1982 CC491K
		Stainless Steel	BS970 304 C 15
		Stainless Steel	BS970 316 C 16
3	Shaft	Stainless Steel	BS970 410 S 21
		Stainless Steel	BS970 431 S 29
4	Seat Ring	EPDM/NBR / Viton / PTFE	
5	O-Ring	EPDM/NBR	
6	Bushing	Bronze	EN 1982 CC491K



Features

- Heavy-Duty Design – Double flanged for secure mounting in large pipelines.
- High Corrosion Resistance – Internal and external Fusion Bonded Epoxy (FBE) coating.
- Versatile Sealing Options – EPDM or NBR seat for various temperature and media requirements.
- Leak-Tight Performance – Complies with BS 5155 for assured sealing.
- Wide Pressure Range – Suitable for both 16 bar and 25 bar systems.
- Ease of Maintenance – Replaceable seat design.
- Multiple Standards Compatibility – Available in PN16 and ANSI flange drilling

Applications

- Municipal water supply and distribution
- Wastewater treatment plants
- Oil and gas pipelines
- HVAC and cooling water systems
- Power plants and industrial fluid handling
- Irrigation networks
- Marine and offshore installations

Technical Specifications

- Parameter Specification
- Valve Standard BS 5155
- Suitable Media Water, Oil & Gas
- Working Pressure
16 bar / 25 bar
- Testing Pressure Shell:
24 bar / 37.5 bar
Seal: 17.6 bar / 27.5 bar
- Working Temperature EPDM Seat: -20°C to 110°C
- NBR Seat: -10°C to 80°C
- Size Range 2" to 120" (50 mm to 3000 mm)
- Coating Internal & External Blue (RAL 5015), FBE Coating
- Flange Options PN16, ANSI
- Body Type Double Flanged

Disclaimer: Images shown are for illustration purposes only. Actual products may vary in appearance and specification. Specifications are subject to change without notice.



BLAZE

Double Flanged Butterfly Valve

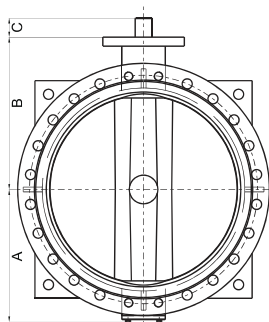
Model No. BT 1425

Dimensions

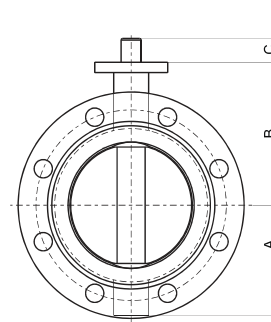
DN	mm	50	65	80	100	125	150	200	250	300	350	400	450	500	600	700	750	800
	inch	2	2-1/2	3	4	5	6	8	10	12	14	16	18	20	24	28	30	32
A		80	80	95	114	114	139	175	203	242	250	317	341	367	432	488	517	544
B		110	134	131	150	170	180	210	245	276	328	376	407	433	508	560	610	620
C		30	30	30	30	30	30	34	34	34	40	52	52	64	70	95	95	95
L		108	112	114	127	140	140	152	165	178	190	216	222	229	267	292	305	318

DN	mm	900	1000	1100	1200	1300	1350	1400	1500	1600	1800	2000	2200	2400	2600	2800	3000	-
	inch	36	40	44	48	52	54	56	60	64	72	80	88	96	104	112	120	-
A		615	669	753	794	968	1062	1066	950	1054	1164	1363	1445	1610	1795	1900	2040	-
B		692	735	813	917	990	1046	1000	1050	1150	1200	1360	1500	1650	1780	1900	2070	-
C		130	130	150	150	200	200	200	200	200	200	200	300	300	300	300	350	-
L		330	410	450	470	490	490	530	570	600	670	760	636/800	850	900	950	1000	-

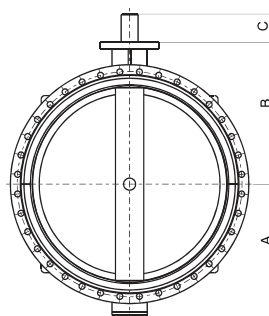
Note: Information listed might be subject to change without notice due to continuing products development.



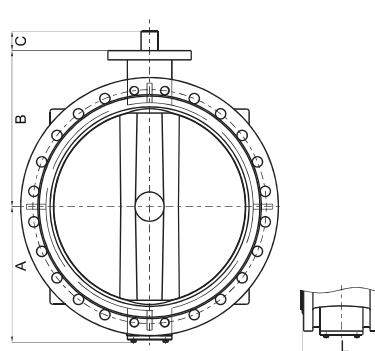
Fit DN400-DN1200 Double Flanged Butterfly valves



Fit DN50-DN350 Double Flanged Butterfly valves



Fit DN1300-DN3000 Double Flanged Butterfly valves



Disclaimer: Images shown are for illustration purposes only. Actual products may vary in appearance and specification. Specifications are subject to change without notice.