



BLAZE

Concentric Wafer Butterfly Valve

Model No. BT 1426

Product Overview

The BLAZE™ Concentric Wafer Butterfly Valve is a versatile and cost-effective flow control solution designed for a wide range of applications including potable water, HVAC, plumbing, and industrial systems. Its compact, lightweight design allows easy installation between flanges in systems where space and weight are critical.

The valve features a center-mounted disc and resilient seat, ensuring a tight shut-off in both flow directions. The concentric design reduces torque requirements and ensures smooth operation, while the wafer-type body is compatible with multiple flange standards. With a ductile iron body, FBE coating, and corrosion-resistant components, the BLAZE™ butterfly valve offers reliable long-term service in demanding environments.

Material List

No.	Part Name	Material	Specification
1	Body	Ductile Iron	EN-GJS-400
2	Disc	Ductile Iron	EN-GJS-400
3	Shaft	Stainless Steel	BS 970 410S11
4	Seat	EPDM	-
5	O-Ring	EPDM	-
6	Pin	Stainless Steel	BS 970 410S11
7	Bushing	PTFE	-
8	Lever	Malleable Iron	-
9	Gear Box Housing	Cast Iron	-



Features

- Replaceable Rubber seat with phenolic backed
- High Axiality of Pinned Shaft
- Low Pressure Loss
- Fusion Bonded Epoxy Powder Coating
- Size Range: 2" to 24" (DN50 to DN600 - WRAS Approved)
- 26" to 48" (DN650 to DN1200 - Standard)

Suitable Media:

- Potable water (WRAS approved)
- Heating water
- Non-corrosive oils
- Low-pressure air or gas (non-aggressive)

Operation:

Standard lever operation for sizes up to 8".
Gear operator provided as standard for sizes above 8".
Optional actuation available: electric or pneumatic (on request).

Approval:

WRAS Certified – Sizes 2" to 24" (DN50 to DN600)

Working Temperature

- 20°C to 110°C (EPDM Seat)
- 10°C to 80°C (NBR Seat)
- 10°C to 130°C (Viton Seat)

Coating

- Blue (RAL5015)

Working Pressure

- 16 Bar

Flange Connection

- ASME Class125/Class 150
- BSEN1092-2 PN10/PN16

Design Standard

- BS 5155

Disclaimer: Images shown are for illustration purposes only. Actual products may vary in appearance and specification. Specifications are subject to change without notice.



Concentric Wafer Butterfly Valve

Model No. BT 1426

BLAZE

Cv Value (90° full open)

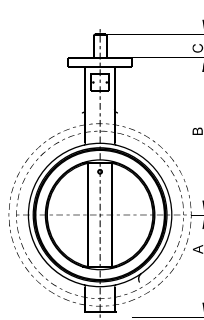
DN	50	65	80	100	125	150	200	250	300	350	400	450	600
INCH	2"	2-1/2"	3"	4"	5"	6"	8"	10"	12"	14"	16"	20"	24"
CV	135	220	302	600	1022	1579	3136	5340	8250	11917	16388	27908	43116

Cv is the flow rate of water in US gallons per minute of 60°F water, which passes through the valve with 1psi pressure drop across the valve.

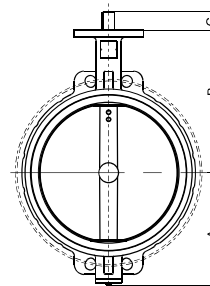
Dimensions

DN	mm	40	50	65	80	100	125	150	200	250	300	350	400
inch	1- 1/2	2	2- 1/2	3	4	5	6	8	10	12	14	16	
A	66	68.6	76	98.6	118.7	129.4	142	176	208.8	248.5	267	316	
B	130	141.2	150.4	156.4	167.9	186.5	205.7	230.6	269.9	327.8	368	400	
C	15	15	19	19	19	19	19	25	32	32	40	52	
L	33	42	44.5	44.5	51	54.5	54.5	59.6	67	75.5	76	102	

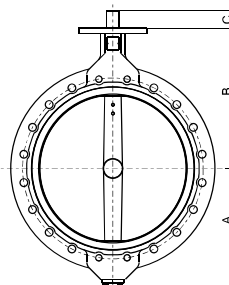
DN	mm	450	500	550	600	650	700	750	800	900	1000	1200	-
inch	18	20	22	24	26	28	30	32	36	40	48	-	-
A	334	370	433	468	484	530	565	602	661	724	869	-	-
B	422	480	533	562	540	626	660	666	722	806	938	-	-
C	52	64	70	70	70	95	95	95	130	130	150	-	-
L	114	127	151	151	172	165	167	188	203	216	276	-	-



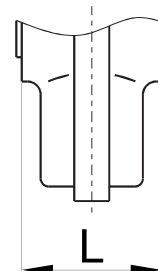
Fit DN40-DN350 Wafer Butterfly valves



Fit DN400-DN500 Wafer Butterfly valves



Fit DN550-DN1200 Wafer Butterfly valves



Disclaimer: Images shown are for illustration purposes only. Actual products may vary in appearance and specification. Specifications are subject to change without notice.