



# BLAZE

# Concentric Lugged Butterfly Valve

Model No. BT 1427

## Product Overview

The BLAZE™ Concentric Lugged Butterfly Valve is a high-performance, bi-directional isolation and flow control valve designed for use in potable water, HVAC, plumbing, and industrial systems. The lug-type body features threaded inserts for secure bolting between flanges, making it ideal for end-of-line service and systems that require easy maintenance or disassembly. With a concentric disc and resilient-seated design, the valve ensures reliable sealing and smooth operation with minimal torque. The ductile iron body and Fusion Bonded Epoxy (FBE) coating provide excellent corrosion resistance, making it suitable for aggressive and potable water environments. Its robust construction and secure mounting make the lugged version ideal for applications where strength, safety, and versatility are essential.

## Material List

No.	Part Name	Material	Specification
1	Body	Ductile Iron	EN-GJS-400
2	Disc	Ductile Iron	EN-GJS-400
3	Shaft	Stainless Steel	BS 970 410S11
4	Seat	EPDM	-
5	O-Ring	EPDM	-
6	Pin	Stainless Steel	BS 970 410S11
7	Bushing	PTFE	-
8	Lever	Malleable Iron	-
9	Gear Box Housing	Cast Iron	-



## Features

- Replaceable Rubber seat with phenolic backed
- High Axiality of Pinned Shaft
- Low Pressure Loss
- Fusion Bonded Epoxy Powder Coating
- Size Range: 2" to 24" (DN50 to DN600-WRAS Approved)
- 26" to 48" (DN650 to DN1200 - Standard)

## Suitable Media:

- Potable water (WRAS approved)
- Heating water
- Non-corrosive oils
- Low-pressure air or gas (non-aggressive)

## Operation:

Standard lever operation for sizes up to 8".  
Gear operator provided as standard for sizes above 8".  
Optional actuation available: electric or pneumatic (on request).

## Approval:

WRAS Certified – Sizes 2" to 24" (DN50 to DN600)

## Working Temperature

- 20°C to 110°C (EPDM Seat)
- 10°C to 80°C (NBR Seat)
- 10°C to 130°C (Viton Seat)

## Coating

- Blue (RAL5015)

## Working Pressure

- 16 Bar

## Flange Connection

- ASME Class125/Class 150
- BSEN1092-2 PN10/PN16

## Design Standard

- BS 5155

Disclaimer: Images shown are for illustration purposes only. Actual products may vary in appearance and specification. Specifications are subject to change without notice.



# Concentric Lugged Butterfly Valve

Model No. BT 1427

**BLAZE**

## Cv Value (90° full open)

DN	50	65	80	100	125	150	200	250	300	350	400	450	500	600
INCH	2"	2-1/2"	3"	4"	5"	6"	8"	10"	12"	14"	16"	18"	20"	24"
CV	135	220	302	600	1022	1579	3136	5340	8250	11917	16388	21705	43116	

Cv is the flow rate of water in US gallons per minute of 60°F water, which passes through the valve with 1psi pressure drop across the valve.

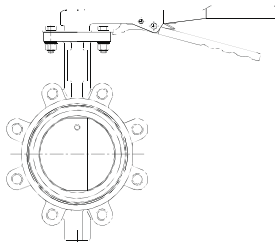
## Dimensions

DN	mm	40	50	65	80	100	125	150	200	250	300	350	400
inch		1- 1/2	2	2- 1/2	3	4	5	6	8	10	12	14	16
A		66	68.6	76	98.6	118.7	129.4	142	176	208.8	248.5	267	316
B		130	141.2	150.4	156.4	167.9	186.5	205.7	230.6	269.9	327.8	368	400
C		15	15	19	19	19	19	19	25	32	32	40	52
L		33	42	44.5	44.5	51	54.5	54.5	59.6	67	75.5	76	102

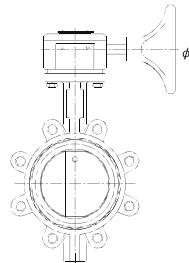
  

DN	mm	450	500	550	600	650	700	750	800	900	1000	1200	-
inch		18	20	22	24	26	28	30	32	36	40	48	-
A		334	370	433	468	484	530	554	602	661	713	850	-
B		422	480	533	562	540	626	660	666	722	806	938	-
C		52	64	70	70	70	95	95	95	130	130	130	-
L		114	127	151	151	172	165	167	188	203	216	254	-

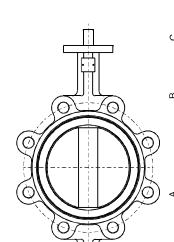
Note :All dimensions are indicative and may be subject to modification based on the end user's specified standards or technical requirements



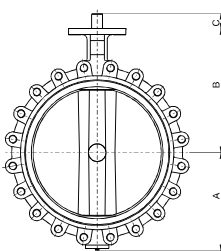
Lever Operated



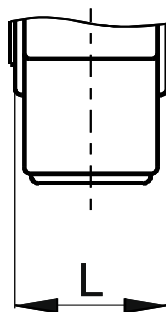
Gear Box Operated



Fit DN40-Dn1000  
Lug Butterfly Valves



Fit DN40-Dn1000  
Lug Butterfly Valves



Disclaimer: Images shown are for illustration purposes only. Actual products may vary in appearance and specification. Specifications are subject to change without notice.