



# U-Type Butterfly Valve

Model No. BT 1428

**BLAZE**

## Product Overview

The BLAZE™ BT 1428 U-Type Butterfly Valve is designed for dependable and efficient shut-off and flow control in water, oil, and gas systems. Built in compliance with BS 5155, it combines highperformance sealing with robust construction. The U-Type body design ensures easy alignment and secure installation between pipeline flanges, while the ductile iron body offers superior strength and durability. With Fusion Bonded Epoxy (FBE) coating inside and out, it provides outstanding corrosion resistance for extended service life in demanding environments.

## Material List

No.	Part Name	Material	Specification
1	Body	Ductile Iron	EN-JS 1050
2	Disc	Ductile Iron	EN-JS 1050
		Bronze	EN 1982 CC491K
		Stainless Steel	BS970 304 C 15
		Stainless Steel	BS970 316 C 16
3	Shaft	Stainless Steel	BS970 410 S 21
		Stainless Steel	BS970 431 S 29
4	Seat Ring	EPDM/NBR / Viton / PTFE	
5	O-Ring	EPDM/NBR	
6	Bushing	Bronze	EN 1982 CC491K



## Features

- U-Type Body Design – Ensures easy installation and proper flange alignment.
- High Strength – Ductile iron body for enhanced durability and impact resistance.
- Excellent Corrosion Protection – Internal and external FBE coating (RAL 5015).
- Versatile Sealing – EPDM or NBR seat to suit temperature and media requirements.
- Reliable Performance – Complies with BS 5155 for sealing integrity.
- Multiple Flange Standards – Available in PN16 and ANSI drilling.

## Applications

- Municipal water supply and distribution
- Oil and gas pipelines
- Wastewater treatment systems
- Industrial fluid handling
- Power plants and cooling systems
- Irrigation and agricultural water networks
- Marine and offshore installations

## Technical Specifications

- Parameter Specification
- Valve Standard BS 5155
- Suitable Media Water, Oil & Gas
- Working Pressure 16 bar / 25 bar
- Testing Pressure
  - Shell: 24 bar / 37.5 bar
  - Seal: 17.6 bar / 27.5 bar
- Working Temperature
  - EPDM Seat: -20°C to 110°C
  - NBR Seat: -10°C to 80°C
- Size Range 6" to 48" (150 mm to 1200 mm)
- Body Material Ductile Iron
- Coating Internal & External Blue (RAL 5015), FBE Coating
- Flange Options PN16, ANSI
- Body Type U-Type

Disclaimer: Images shown are for illustration purposes only. Actual products may vary in appearance and specification. Specifications are subject to change without notice.



**BLAZE**

# U-Type Butterfly Valve

**Model No. BT 1428**

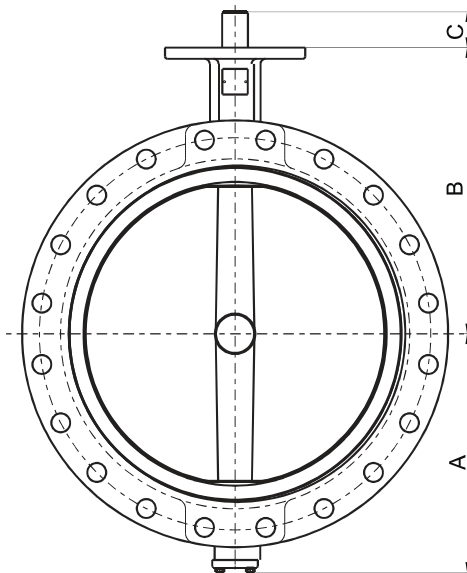
## Dimensions

DN	mm	150	200	225	250	300	350	375	400	450	500	550
	inch	6	8	9	10	12	14	15	16	18	20	22
A		133	175	190	201	242	267	320	316	344	380	432
B		226	260	275	292	337	368	375	400	422	480	533
C		30	34	34	34	34	40	52	52	52	64	70
L		55	60	67	67	76	76	102	102	114	127	151

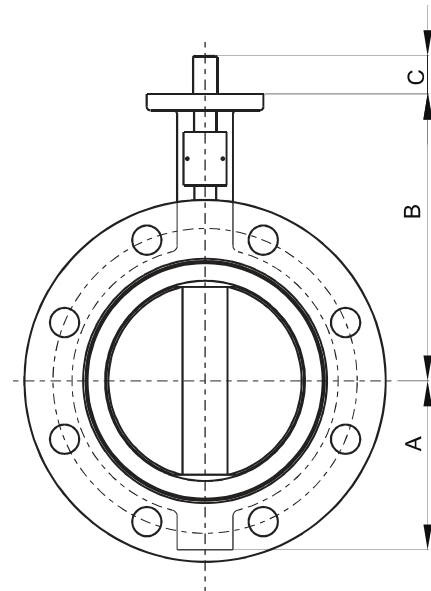
  

DN	mm	600	650	700	750	800	850	900	1000	1050	1100	1200
	inch	24	26	28	30	32	32	36	40	42	44	48
A		468	484	530	564	602	590	661	724	784	804	869
B		562	540	626	660	666	695	722	806	865	820	938
C		70	70	95	95	95	95	130	130	150	150	150
L		151	172	165	167	188	190	203	216	251	253	276

Note: Information listed might be subject to change without notice due to continuing products development.



Fit DN400-DN1200 U-Type Butterfly valves



Fit DN40-DN350 U-Type Butterfly Valves

Disclaimer: Images shown are for illustration purposes only. Actual products may vary in appearance and specification. Specifications are subject to change without notice.