



Product Overview

The Blaze BT 1212 Brass Float Valve is designed for automatic level control in water storage systems such as tanks, reservoirs, and cisterns. It uses a stainless steel float ball to open or close the valve based on water level, ensuring efficient water regulation without the need for manual intervention. Built from high-quality brass and rated for PN 10 MPa, this valve is ideal for high-pressure water systems requiring reliable and maintenance-free operation.

Material List

No.	Name	Material	Specification
1	Body	Brass	CW614N
2	Nut	Brass	CW614N
3	Gasket	NBR	-
4	Gasket	NBR	-
5	The Valve Core	Brass	CW614N
6	Hinge Pin	Brass	CW614N
7	Hinge	NBR	CW614N
8	Nut	Brass	CW614N
9	Ball	NBR	SS304



Features

- Brass body for strength and corrosion resistance
- Stainless steel float ball for durability and hygienic operation
- Automatically maintains water levels in tanks and reservoirs
- High-pressure rating: PN 10 MPa
- BSPT threaded connection conforming to ISO 7
- Suitable for potable and non-potable water systems
- Smooth and responsive operation
- Compact and easy to install

Applications

- Overhead water tanks and reservoirs
- Domestic and commercial water storage systems
- Irrigation tanks and agricultural water control
- Industrial process tanks
- Cooling tower make-up water control
- Gravity-fed water systems

Technical Details

- Product Type: Brass Float Valve with Stainless Steel Ball
- Pressure Rating: PN 10 MPa
- Working Medium: Water
- Working Temperature: < 90°C
- Pipe Thread: ISO 7 (BSPT – British Standard Pipe Taper)
- Body Material: Brass
- Float Ball Material: Stainless Steel



BLAZE

Float Valve with Stainless Steel Ball

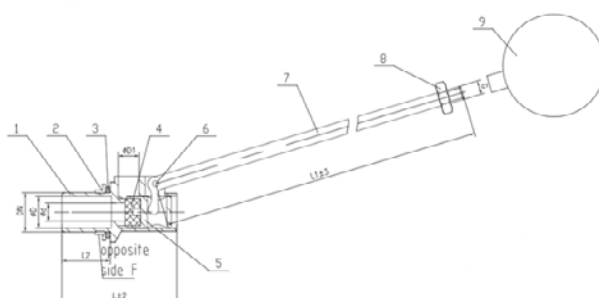
Model No. BT 1212

Dimensions

DN	INCH	L	L1	L2	d	D	D1	F
15	½"	64	64	25	6	16	12	24
20	¾"	66	66	27	6	20.5	12	30
25	1"	68	68	29	8	26.5	12	36.5
32	1¼"	121	121	45	15	34.5	24	45.5
40	1½"	131	131	50	17	40	27	53
50	2"	131	131	50	17	49.5	27	65
65	2½"	143	143	50	25	66	30	88
80	3"	152	152	50	35	78	35	100
100	4"	169	169	50	40	103	45	125

Weight body+ Rod(g)	BALL (SIZE)	PP BALL Weight	L1	Weight Body+ Rod(g)	Stainless Steel Ball(Size)	Stainless Steel (weight)	Copper Ball (Size)	Copper Ball (weight)
194	4.5"	65			100mm	80	100mm	80
220	5"	95			120mm	115	120mm	120
295	6"	150			150mm	190	150mm	220
806	8"	370			200mm	390	200mm	400
1135	10"	370	M14-650	13401	250mm	550	250mm	650
1431	12"	570	M14-680	1635	250mm	550	250mm	650
2131	12"	1245	M14-880	2535	330mm	880	350mm	2200
2875	12"	1245	M14-1000	3280	330mm	880	350mm	2200
4115	12"	1245	M14-1140	4520	30mm	880	350mm	2200

Note: All dimensions are provided for informational purposes only. Please cross-check and confirm with the official technical drawings before installation or fabrication.



Disclaimer: The image shown in this data sheet is for illustration purposes only. The actual product may vary based on manufacturing standards and specifications.